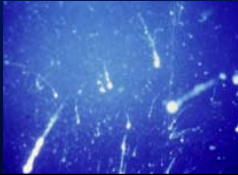


Ecological and Biogeochemical Interactions in the Mesopelagic Zone

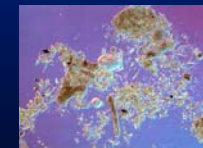
Welcome!



Central aim of this workshop

To identify the current state of our knowledge about mesopelagic food-web processes, particle dynamics, and biogeochemical cycling, and to identify gaps in our knowledge to be pursued in future research programs.

- What do we know?
- What don't we know?
- What do we do next? (where should we put future effort?)



* We are diverse group with diverse perspectives

Sessions

- Mesopelagic POM/ DOM distribution, source material, characterization, flux
- Planktonic food web controls on vertical export, cycling, and composition of POC and DOC
- Linking microbial and metazoan diversity to function
- Regional comparisons of mesopelagic food-web structure and biogeochemistry, potential response to environmental change
- Ecological and biogeochemical approaches to estimating remineralization rates
- Methods, new technologies
- What should future mesopelagic zone research programs look like?

Products

- Newsletter article (EOS, IMBER)
- Synthesis paper/ perspective papers
- Deep-Sea Research II special volume- The Dark Ocean (with Bathypelagic workshop)
Deadline: March 15
- Others: e.g., SCOR working group, education

Scientific program committee

Debbie Steinberg (co-chair, USA)
Hiroaki Saito (co-chair, Japan)

Javier Arístegui (Spain)
George Jackson (USA)
Carol Robinson (UK)
Richard Sempéré (France)

Plenary speaker- Richard Lampitt (UK)